



Standing Strong as a Stand-Alone

Virna M. Bazan, Principal

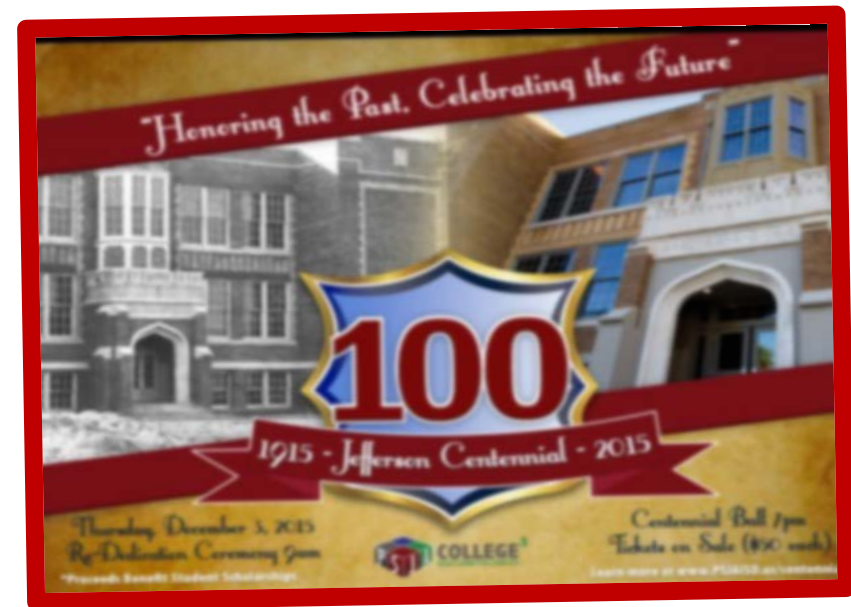
Mariza Saenz , Assistant Principal

Corina Lopez, Transition Specialist/Counselor

**PSJA Thomas Jefferson T-STEM Early College High School
Pharr-San Juan-Alamo ISD**

BACKGROUND

- Designated as the first stand-alone T-STEM Early College High School in Pharr-San Juan-Alamo ISD in 2008
- First graduating class in 2012
- ECHS Demonstration Site
- 2015 Texas Honor Roll School
- U.S. New & World Report Top High School in Texas
- 5 Star Designation School



ENROLLMENT

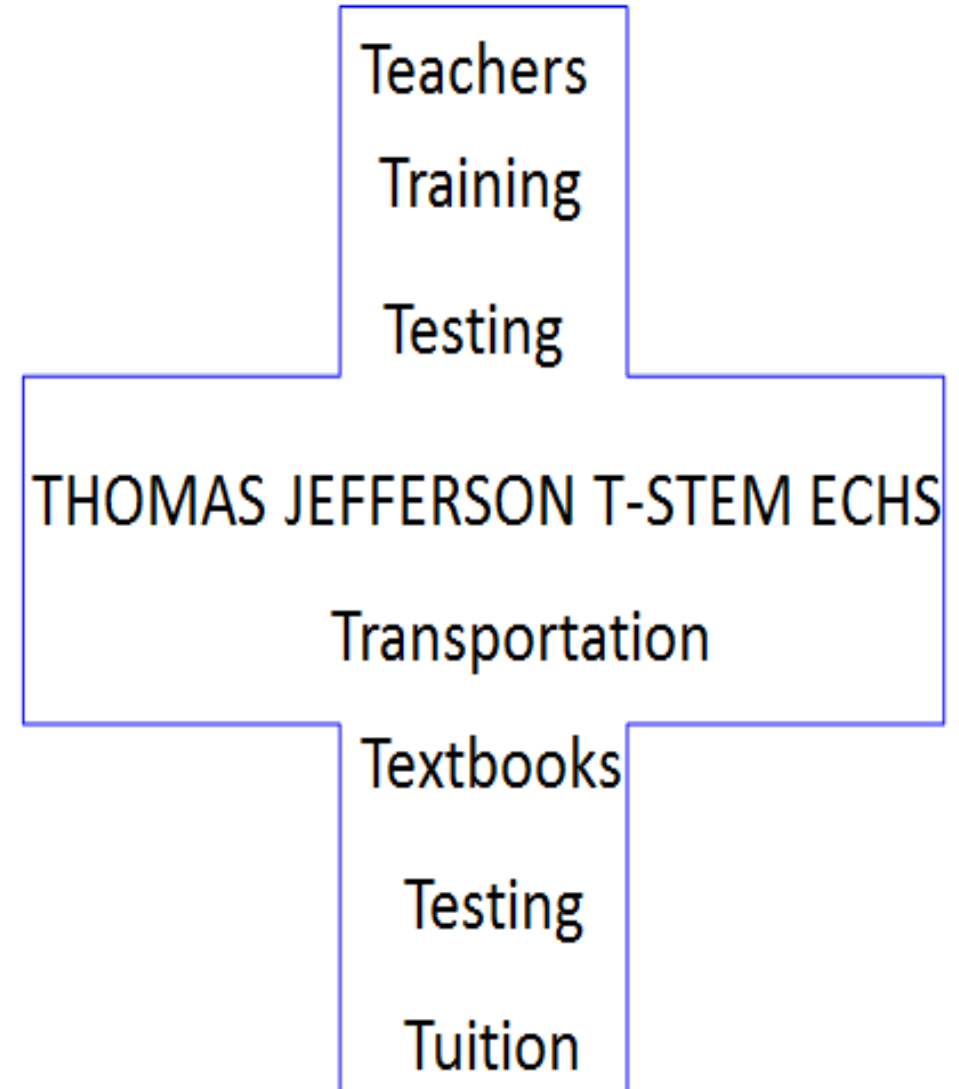
9th Grade Students	207
10th Grade Students	194
11th Grade Students	152
12th Grade Students	127
Total Students	680



Male: 281 Female: 319
Economically Disadvantaged 75%
ELL 11%
Full-time teachers 37
Student/Teacher Ratio 16:1
Average class size 25

ECHS BLUEPRINT

1. Target Population
2. Partnership Agreement
3. P-16 Leadership Initiatives
4. Curriculum and Support
5. Academic Rigor and Readiness
6. School Design

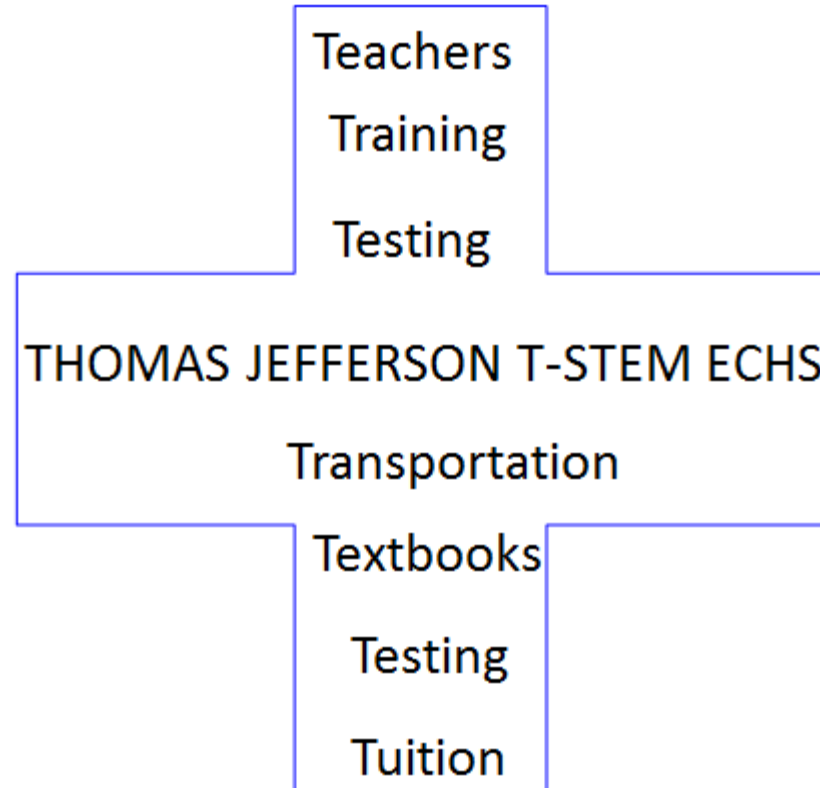


STRONG COMMITTED PARTNERSHIP



PSJA THOMAS JEFFERSON T-STEM ECHS

- Tuition
- Transportation
- Teachers
- Training
- Tutoring
- Testing
- Textbooks



TUITION

- Tuition is waived for PSJA dual enrollment students.
- Dual enrollment students may receive a bill to pay tuition. If so, notify your college ECHS Coordinator/Liaison to assist in verifying that the ECHS student is coded as a dual enrollment student.
- Request college professors to teach dual enrollment courses on campus. Professors will have to be paid for every section taught (Dual Enrollment Course Agreements).
- If a student has to be registered for a course after the census date, a \$150 fee will be charged to the ECHS.

TRANSPORTATION

- Budget needs to include transportation costs for the students taking courses at the college campus.
- Transportation to and from the college campus is needed during the regular school year and in the summer.
- Lunch is purposefully scheduled for the students before they leave and when they arrive from college campus.

TEACHERS

- Selection of highly qualified staff—teachers with a Masters Degree to teach dual enrollment courses on campus
- Teachers use data-driven instruction, aligned standards and scope and sequence instruction, high-quality curricular materials, share responsibility and accountability for student learning, common instruction framework



TRAINING

- Collaborative training between higher education partner and early college high school on college and high school policies for all dual enrollment staff.
- ECHS staff is trained to become college advisors.
- ECHS staff is trained on side-by-side high school/associate degree plans.



College Readiness Standards				
STAAR	THEA		ACCUPLACER	
Level II in W,R,M, S, SS for Graduation Level III in W,R, M,S, SS for DAP	Writing 220+	MATH 230+	Reading 230+	Writing ES-7 & 60+ or ES/60+ MATH 60+ Reading 70+

Credit Check				
High School			South Texas College	
Graduation Requirements 2012-2013				
	I	II	III	IV
English	1/2 1/2	1/2 1/2	1/2 1/2	1/2 1/2
Mathematics	1/2 1/2	1/2 1/2	1/2 1/2	1/2 1/2
Science	1/2 1/2	1/2 1/2	1/2 1/2	1/2 1/2
Social Studies	1/2 1/2	1/2 1/2	1/2 1/2	1/2 1/2
Government/ Economics	1/2	1/2		
Foreign Language (2) R (3) DAP	1/2 1/2	1/2 1/2	1/2 1/2	1/2 1/2
Misc.	1/2	1/2	1/2	1/2
Electives				
1/2	1/2	1/2	1/2	1/2
1/2				

Core Curriculum			
Communication	ENGL 1301	ENGL 1302	SPCH 1311
Mathematics	MATH 2412		
Natural Sciences	PHYS 2425	PHYS 2426	
Social and Behavioral Sciences	HIST 1301	HIST 1302	ECON 2301
Humanities/ Visual Performing Arts	SPAN1311	MUSI 1301	
Computer Science	COSC 1336		
Program Electives			
MATH 2413	MATH 2414	ENGR 1101	ENGR 1204
ENGR 2301	ENGR 2302	ENGR 2430	

9th Grade		10th Grade		11th Grade		12th Grade	
Fall & Spring	Summer	Fall & Spring	Summer	Fall & Spring	Summer	Fall & Spring	Summer
HS	STC	HS	STC	HS	STC	HS	STC
English I		English II		English III		English IV	
Algebra I		Geometry		Algebra II		4 th Math	
Biology		Chemistry		Physics		4 th Science	
World Geography		World History		US History		GOVT 2305	
Spanish		(PE)*				ECON 2301	
Speech	SPCH 1311	SPAN 1311		Spanish (DAP)		GOVT 2306	
Fine Arts		SPAN 1312					
	COSC 1301		ENGR1101				

"Whatever you can do or dream you can do, begin it. Boldness has genius, power and magic in it!"
 --Goethe

Student Signature and Date _____ Parent Signature and Date _____ Principal Signature and Date _____ Counselor Signature and Date _____
 Teacher Signature and Date _____ CTE Counselor Signature and Date _____ LPAC Signature and Date _____ Special Education Signature and Date _____

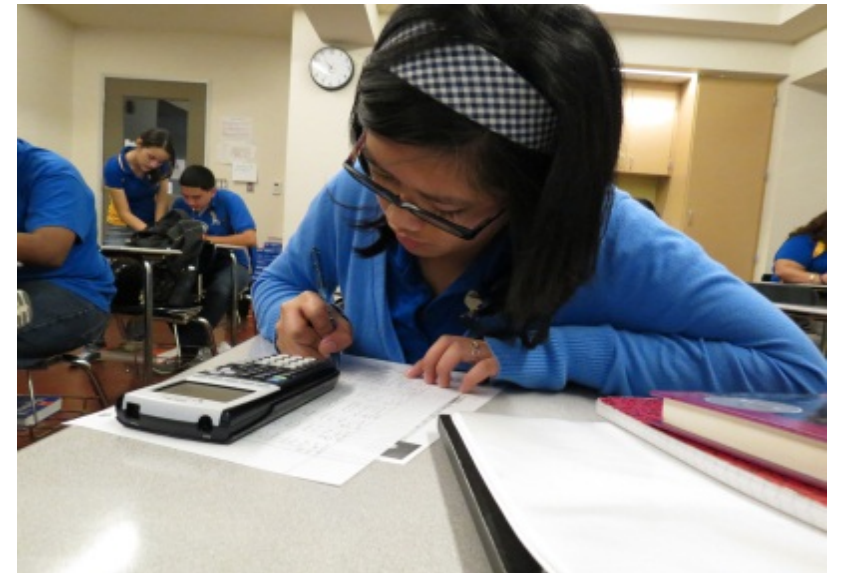
TUTORING

- AM/PM
- Saturday Academy
- Student-Led Peer Tutoring
- Early Alert System
- Advising



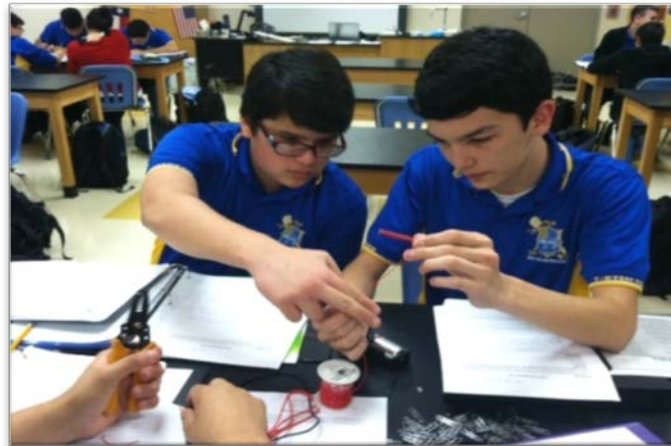
TESTING

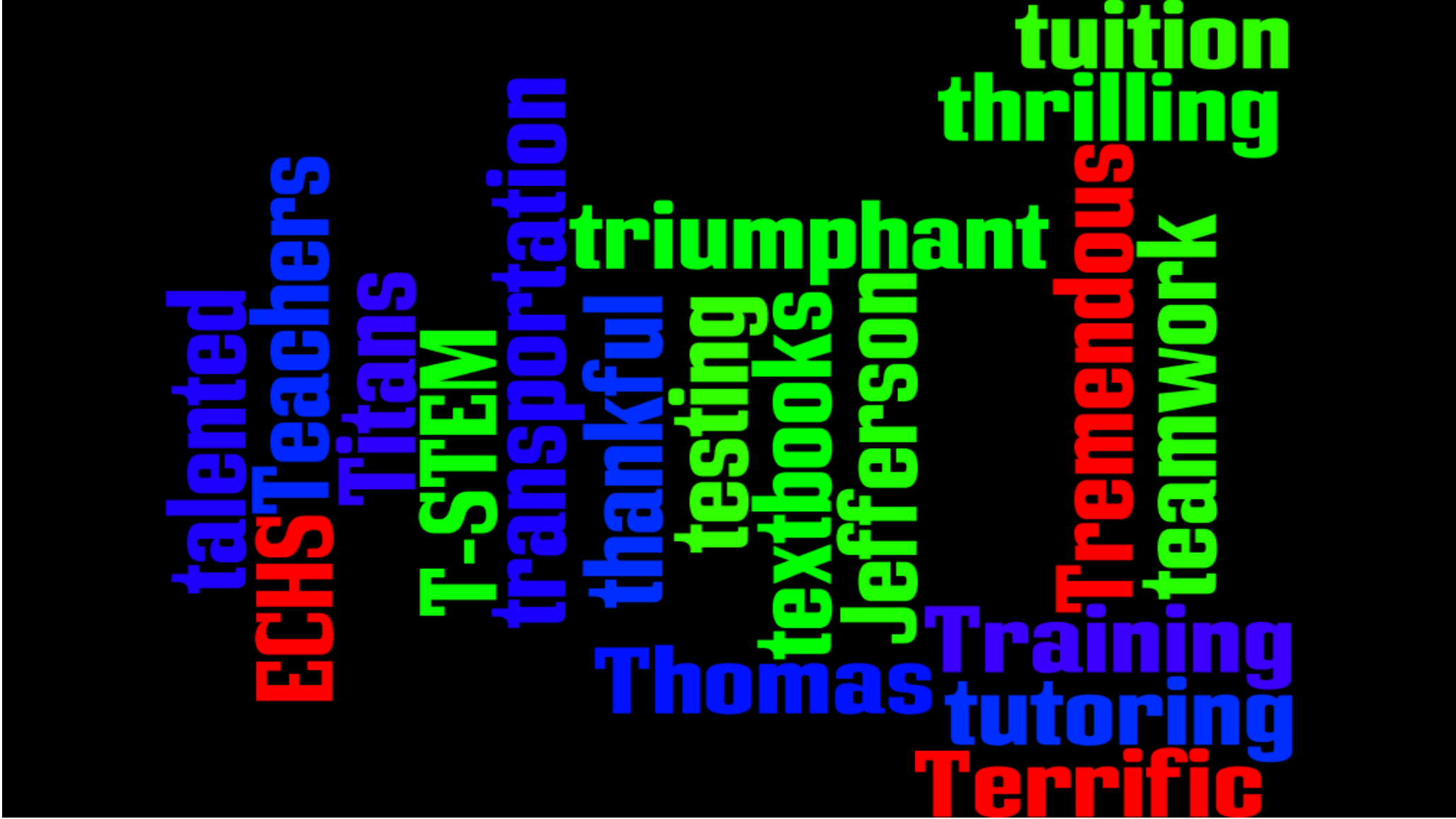
- STAAR
- Advanced Placement—Pre-AP, AP
- TSI
- PSAT/SAT
- ACT



TEXTBOOKS

- Voucher system for textbooks would ensure that students integrated at the college campus will receive their textbooks the first day of class.
- College professors teaching college courses at ECHS must request the same college textbook for five years as stated in MOU.





Q & A