

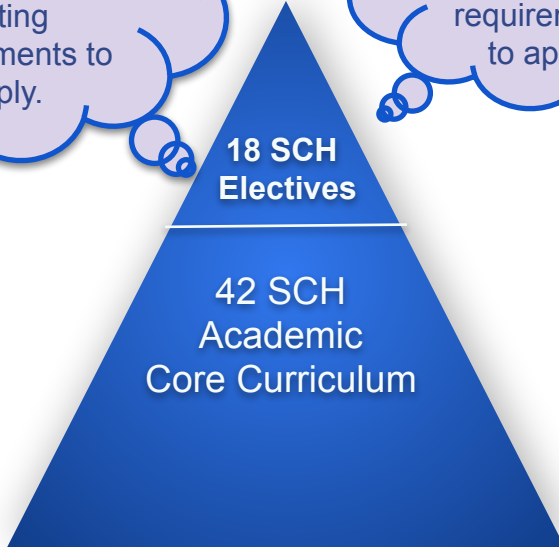
College for All

Garland ISD



COLLEGE DEGREES IN HIGH SCHOOL

Collegiate Academy



Associate of Arts (AA)
Associate of Science (AS)

Early College HS



P-TECH

Associate of Applied Science (AAS)



P-TECH Programs



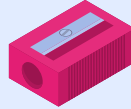
Garland

Engineering
Manufacturing



Lakeview

Criminal Justice
Business/Accounting



Naaman Forest

Construction
Mortgage Banking



North Garland

Pre-Med/Pre-Dental
Networking



Rowlett

Gaming
Software Development



Sachse

Multimedia Web Design
Teaching



South Garland

Automotive
Mechanics
Teaching

ECHS Programs

Rowlett and South Garland

Collegiate Programs

Lakeview and Naaman Forest

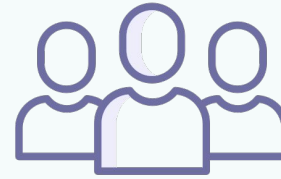
New ECHS Programs for 21-22

North Garland

Garland

Sachse

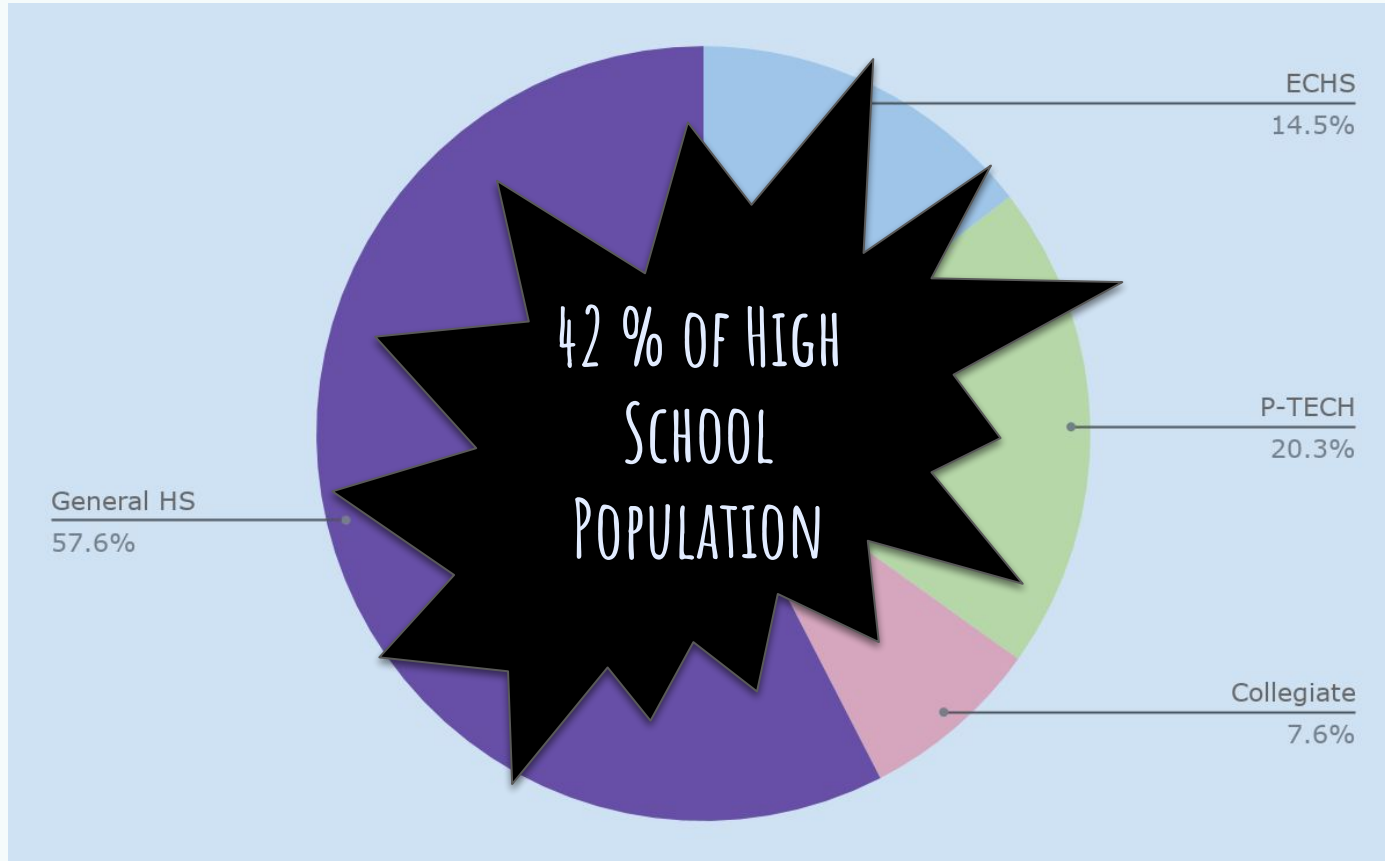
20-21 Enrollment



P-TECH	9th	10th
Garland	36	
Lakeview	116	
Naaman Forest	42	
North Garland	125	
Rowlett	77	119
South Garland	55	
Sachse	128	
Total:	579	119

Collegiate/ ECHS	9th	10th
Lakeview	125	118
Naaman Forest	126	117
Rowlett	77	
South Garland	118	135
Total:	446	370

2024-2025 Enrollment Projection



Key Differences of ECHS/P-TECH and Traditional Dual Credit

- Small school environment (500 students per program)
- Accelerated instruction
- Student support
- Students begin taking college classes in 9th grade
- Structured sequence of courses leading to an associates degree
- Students spend the entire day on the college campus during the Senior year

Target Population

- At risk students
- Students who are underrepresented in college
 - First generation college goers
 - Economically disadvantaged students
 - English language learners



Student Support

- AVID
- Summer acceleration program
- Academic support/Intervention
- Accelerated curriculum
- Social emotional support
- Parent involvement
- Community involvement



Leadership

High School Assistant Principal = Early College Principal

- Support teachers with accelerated learning
- Assist parents in supporting their high-school aged college student
- Attend district and campus level steering committee meetings, site team meetings with the IHE and TEA-required meetings.
- Supervise students when they transition to the Dallas College campus junior or senior year

Year 1 Data and Outcomes

2019-2020



Students Enrolled for 2019-2020

375 Early College Students

22% At Risk

**69% Economically
Disadvantaged**

**15% English
Learners**



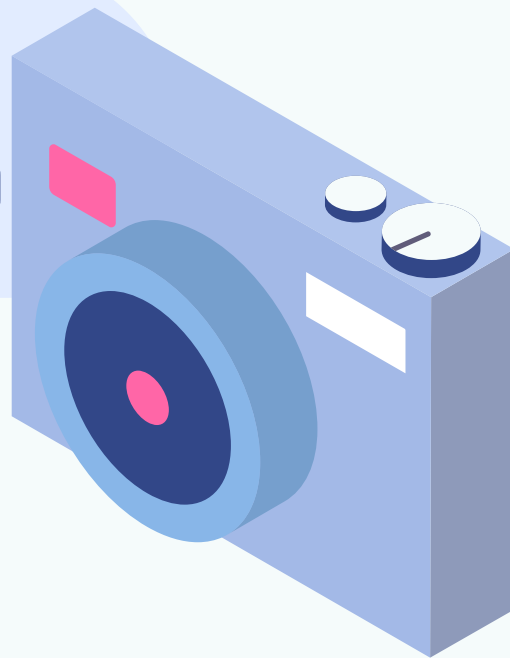
Texas Success Initiative Assessment (TSIA) Snapshot


Percent of Early College Cohort 1
who are TSI met in
WRITING

94%

72%

Percent of Early College Cohort 1
who are TSI met in
READING



A student is sitting on a concrete step, wearing a dark blue jacket with yellow and white striped cuffs and light blue jeans. They are holding an open book with a yellow cover. To their left, on a white surface, are a pair of glasses and a small red object. A pink folder is also visible on the ground.

GISD Students Earned 1,613
College Credits in 19-20
P-TECH/ECHS programs

60 Hours of College Credit

Dallas College	University of Texas	Baylor University	GISD ECHS/P-TECH
\$4,740	\$24,000	\$89,000	FREE





THANKS

Questions?

